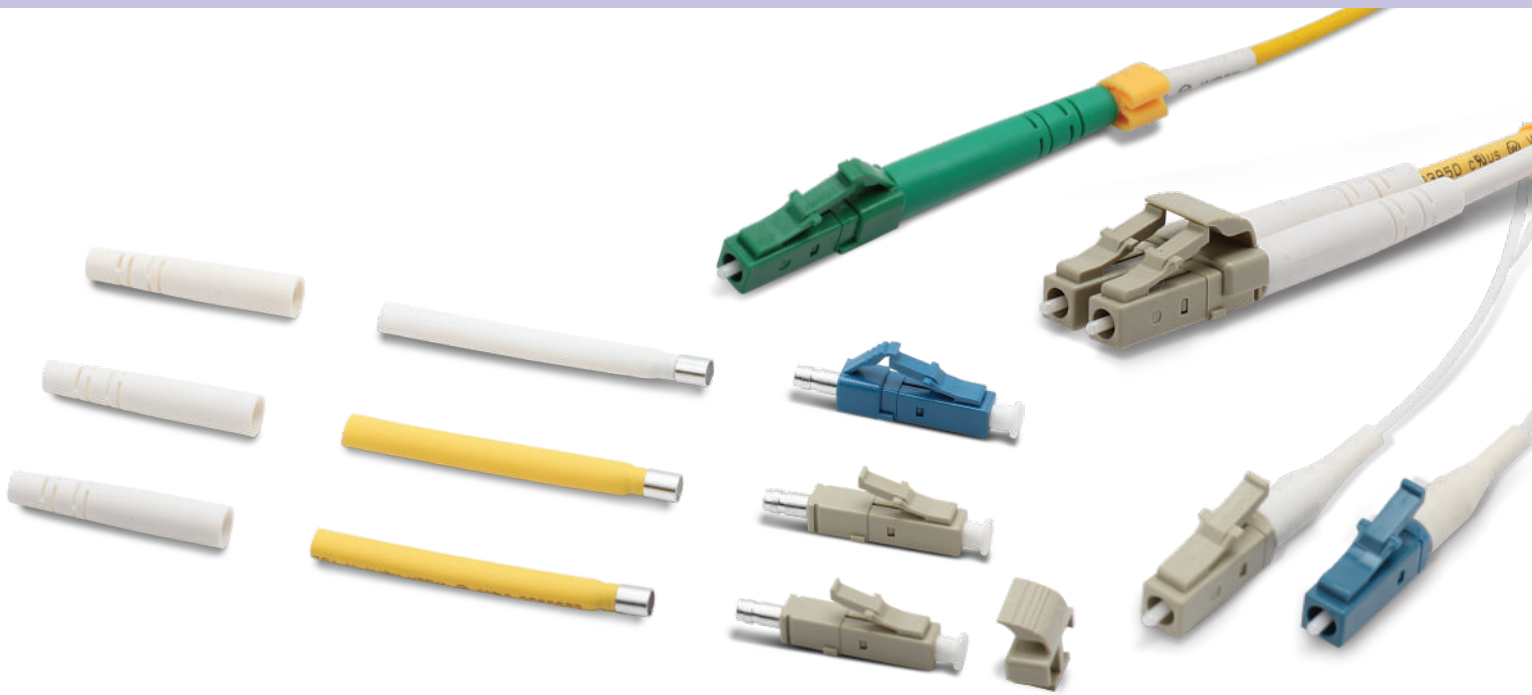


Fiber Connector Series – LC



Features

- Telcordia GR-326 compliant
- Both metal and polymer body
- Singlemode and multimode version

Applications

- Local area Networks
- Fast Ethernet
- ATM Networks
- Optical transport
- Optical access network

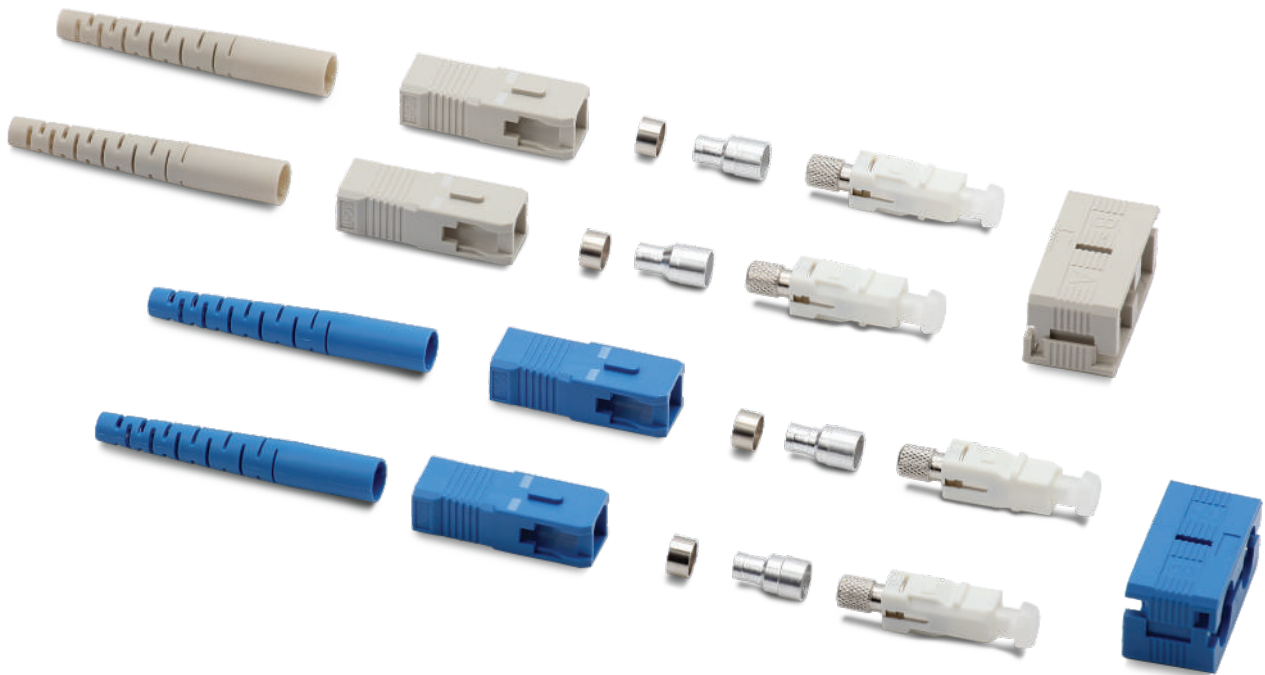
Product Description

Birla connectors offers superior performance with very high repeatability. These products are fully intermatable with standard NTT products and deliver long term stability under wide range of applications. Our product utilizes preradiuserd Zerconia ferrules to ensure low loss.

Technical Features

Parameters	Multimode	Single mode
Insertion loss	0.2dB Typical	0.15dB Typical
	0.3dB Max	0.25dB Max
Back Reflection	-25dB Typical	-35dB PC Polish
		-45dB Super PC Polich
		-55dB Ultra PC Polish
Connection Durability	500 Matings	500 Matings
Connector Repeatability	$\Delta IL < 0.2dB$	$\Delta IL < 0.1dB$
Operating Environment	-40°C to +85°C	-40°C to +85°C
Temperature Cycling	$\Delta IL < 0.2dB/\Delta RL < 5dB$	$\Delta IL < 0.2dB/\Delta RL < 5dB$
Vibration	$\Delta IL < 0.1dB/\Delta RL < 5dB$	$\Delta IL < 0.1dB/\Delta RL < 5dB$
Cable retension	>6.8 kg	>6.8 kg

Fiber Connector Series – SC



Features

- Telcordia GR-326 compliant
- Both metal and polymer body
- Singlemode and multimode version

Applications:

- Local area Networks
- Fast Ethernet
- ATM Networks
- Optical transport
- Optical access network

Product Description

Birla connectors offers superior performance with very high repeatability. These products are fully intermatable with standard NTT products and deliver longterm stability under wide range of applications. Our product utilizes preradiuserd Zerconia ferrules to ensure low loss.

Technical Features

Parameters	Phosphor /Bronze	Zirconica
Insertion loss	<0.3 dB	<0.2dB
Connection Durability	500 Matings	500 Matings
Connector Repeatability	Δ IL < 0.1dB	Δ IL < 0.1dB
Operating Environment	-40°C to +85°C	-40°C to +85°C

Fiber Connector Series – FC and ST



Features

- Telcordia GR-326 compliant
- Both metal and polymer body
- Singlemode and multimode version

Applications:

- Local area Networks
- Fast Ethernet
- ATM Networks
- Optical transport
- Optical access network

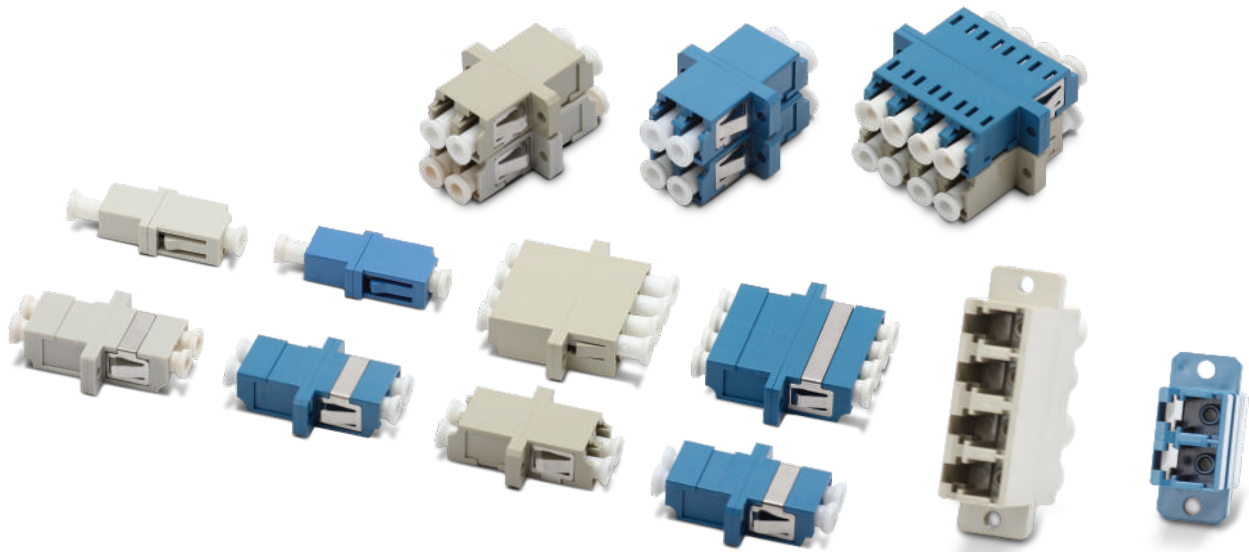
Product Description

Birla connectors offers superior performance with very high repeatability. These products are fully intermatable with standard NTT products and deliver longterm stability under wide range of applications. Our product utilizes preradiuserd Zerconia ferrules to ensure low loss.

Technical Features

Parameters	Phosphor /Bronze	Zirconica
Insertion loss	<0.3 dB	<0.2dB
Connection Durability	500 Matings	500 Matings
Connector Repeatability	Δ IL < 0.1dB	Δ IL < 0.1dB
Operating Environment	-40°C to +85°C	-40°C to +85°C

Fiber Adapter Series – LC (Quad/Duplex/Simplex)



Features

- Excellent changability and directivity
- 100% optically tested(Insertion loss)
- Ceramic and Phosphor bronze sleeve tube optional
- Accurate mounting dimentions
- As per ITU standard

Product Description

Birla adapters offers superior performance with very high repeatability. These adapters has very low insertion loss. Adapters are available in snap-in and flange mount options and support both single mode and multimode fiber applications including OM3 fiber specifications, making them suitable for 10G applications.

Applications:

- Local area Networks
- Fast Ethernet
- ATM Networks
- Optical transport
- Optical access network

Technical Features

Parameters	PC	APC
Insertion loss	<0.2 dB	<0.2dB
Connection Durability(500 Cycles) dB	<0.2 dB	<0.2 dB
Returnloss- dB	≥ 50	≥ 65
Temperature Stability	<0.3 dB	<0.3 dB
Operating Environment	-20°C to +70°C	-20°C to +70°C
Storage Environment	-40°C to +80°C	-40°C to +80°C

Fiber Adapter Series – ST (Duplex/Simplex)



Features

- Excellent changability and directivity
- 100% optically tested (Insertion loss)
- Ceramic and Phosphor bronze sleeve tube optional
- Accurate mounting dimensions
- As per ITU standard

Applications:

- Local area Networks
- Fast Ethernet
- ATM Networks
- Testing and measuring instruments
- FDMS, Mounts in wall mount cabinets and rack mount units

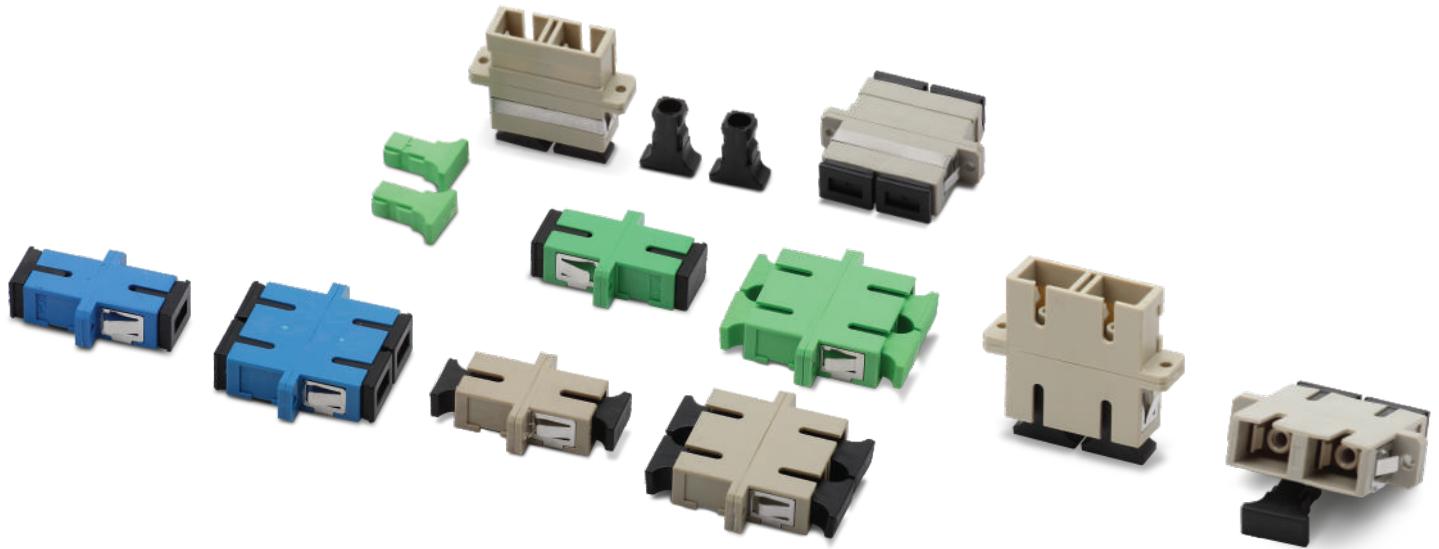
Product Description

Birla adapters offers superior performance with very high repeatability. These adapters has very low insertion loss. Adapters are available in snap-in and flange mount options and support both single mode and multimode fiber applications including OM3 fiber specifications, making them suitable for 10G applications.

Technical Features

Parameters	PC	APC
Insertion loss	<0.2 dB	<0.2dB
Connection Durability(500 Cycles) dB	<0.2 dB	<0.2 dB
Returnloss- dB	≥ 50	≥ 65
Temperature Stability	<0.3 dB	<0.3 dB
Operating Environment	-20°C to +70°C	-20°C to +70°C
Storage Environment	-40°C to +80°C	-40°C to +80°C

Fiber Adapter Series – SC (Duplex/Simplex)



Features

- Excellent changability and directivity
- 100% optically tested (Insertion loss)
- Ceramic and Phosphor bronze sleeve tube optional
- Accurate mounting dimentions
- As per ITU standard

Product Description

Birla adapters offers superior performance with very high repeatability. These adapters has very low insertion loss. Adapters are available in snap-in and flange mount options and support both single mode and multimode fiber applications including OM3 fiber specifications, making them suitable for 10G applications.

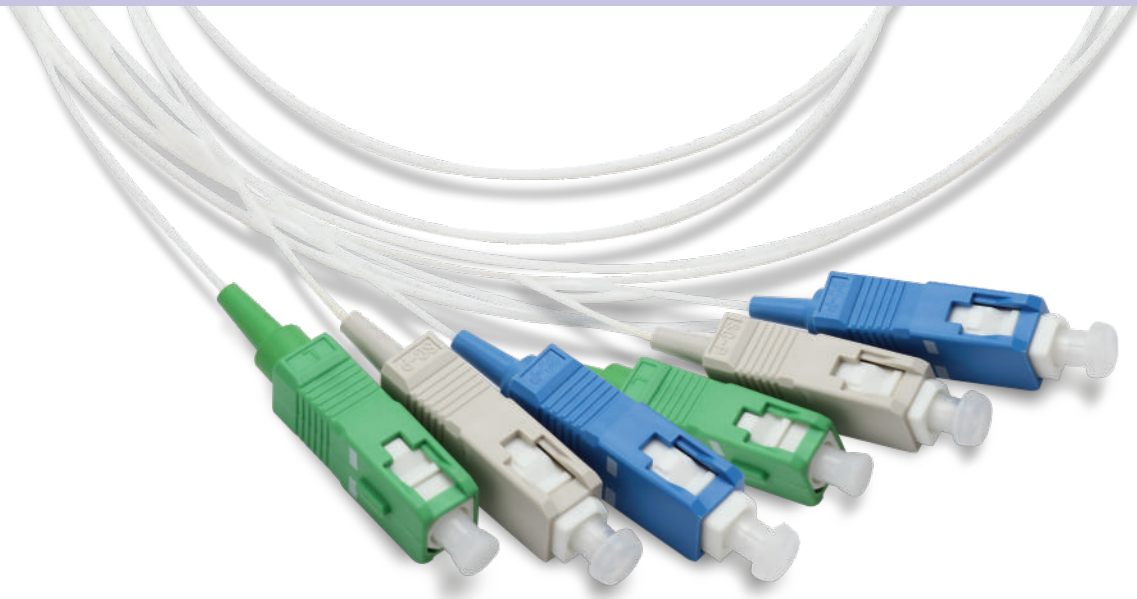
Applications:

- Local area Networks
- Fast Ethernet
- ATM Networks
- Testing and measuring instruments
- FDMS, Mounts in wall mount cabinets and rack mount units

Technical Features

Parameters	PC	APC
Insertion loss	<0.2 dB	<0.2dB
Connection Durability(500 Cycles) dB	<0.2 dB	<0.2 dB
Returnloss- dB	≥ 50	≥ 65
Temperature Stability	<0.3 dB	<0.3 dB
Operating Environment	-20°C to +70°C	-20°C to +70°C
Storage Environment	-40°C to +80°C	-40°C to +80°C

Fiber Pigtail Series – SC (Singlemode/Multimode)



Features

- Excellent changability and directivity
- 100% optically tested (Insertion loss)
- Pre-polished connectors
- Accurate mounting dimensions
- As per ITU standard

Applications:

- Local area Networks
- Fast Ethernet
- ATM Networks
- Testing and measuring instruments
- FDMS, Mounts in wall mount cabinets and rack mount units

Product Description

Birla pigtails offers superior performance with very high repeatability. The optical fiber pigtails are essential when terminating cables within the splice closure. Purchasing the prepolished assemblies the risk away of poor connector termination in the project. Cables terminated within the production facility will give the higher performance than cable terminated at site. The cables and connectors used in Birla is the best. It is our expertise in Fiber and cable manufacturing that sets our product higher than others. We manufacture the optical fiber assemblies using biconic and SMA through ST, SC to today's small form factor connectors like LC, MU or MT-RJ. If you have the fiber network no matter what the technology is Birla can offer you the solution form optical cable assemblies. With Birla cable assembly you can be confident that you are using very best cable, fiber and connectors in the globe.

Technical Features

Parameters	Multimode	Single mode
Insertion loss	0.2dB Typical	0.15dB Typical
	0.3dB Max	0.25dB Max
Back Reflection	-25dB Typical	-35dB PC Polish
		-45dB Super PC Polish
		-55dB Ultra PC Polish
Connection Durability	500 Matings	500 Matings
Connector Repeatability	$\Delta IL < 0.2dB$	$\Delta IL < 0.1dB$
Operating Environment	-40°C to +85°C	-40°C to +85°C
Temperature Cycling	$\Delta IL < 0.2dB / \Delta RL < 5dB$	$\Delta IL < 0.2dB / \Delta RL < 5dB$
Vibration	$\Delta IL < 0.1dB / \Delta RL < 5dB$	$\Delta IL < 0.1dB / \Delta RL < 5dB$
Cable retention	>6.8 kg	>6.8 kg

Fiber Pigtail Series – LC (Singlemode/Multimode)



Features

- Excellent changability and directivity
- 100% optically tested (Insertion loss)
- Pre-polished connectors
- Accurate mounting dimensions
- As per ITU standard

Applications:

- Local area Networks
- Fast Ethernet
- ATM Networks
- Testing and measuring instruments
- FDMS, Mounts in wall mount cabinets and rack mount units

Product Description

Birla pigtails offers Birla pigtails offers superior performance with very high repeatability. The optical fiber pigtails are essential when terminating cables within the splice closure. Purchasing the prepolished assemblies the risk away of poor connector termination in the project. Cables terminated within the production facility will give the higher performance than cable terminated at site. The cables and connectors used in Birla is the best. It is our expertise in Fiber and cable manufacturing that sets our product higher than others. We manufacture the optical fiber assemblies using biconic and SMA through ST, SC to today's small form factor connectors like LC, MU or MT-RJ. If you have the fiber network no matter what the technology is Birla can offer you the solution form optical cable assemblies. With Birla cable assembly you can be confident that you are using very best cable, fiber and connectors in the globe.

Technical Features

Parameters	Multimode	Single mode
Insertion loss	0.2dB Typical	0.15dB Typical
	0.3dB Max	0.25dB Max
Back Reflection	-25dB Typical	-35dB PC Polish
		-45dB Super PC Polich
		-55dB Ultra PC Polish
Connection Durability	500 Matings	500 Matings
Connector Repeatability	$\Delta IL < 0.2dB$	$\Delta IL < 0.1dB$
Operating Environment	-40°C to +85°C	-40°C to +85°C
Temperature Cycling	$\Delta IL < 0.2dB/\Delta RL < 5dB$	$\Delta IL < 0.2dB/\Delta RL < 5dB$
Vibration	$\Delta IL < 0.1dB/\Delta RL < 5dB$	$\Delta IL < 0.1dB/\Delta RL < 5dB$
Cable retension	>6.8 kg	>6.8 kg

Fiber Pigtail Series – ST (Singlemode/Multimode)



Features

- Excellent changability and directivity
- 100% optically tested(Insertion loss)
- Pre-polished connectors
- Accurate mounting dimentions
- As per ITU standard

Applications:

- Local area Networks
- Fast Ethernet
- ATM Networks
- Testing and measuring instruments
- FDMS, Mounts in wall mount cabinets and rack mount units

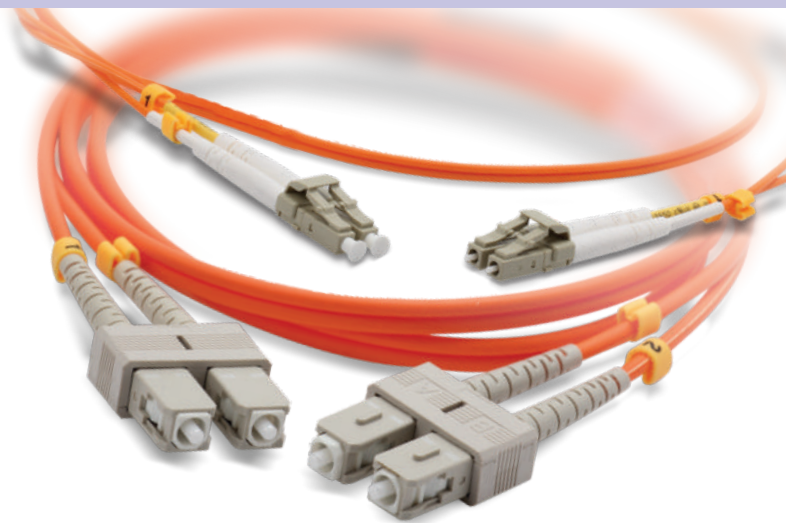
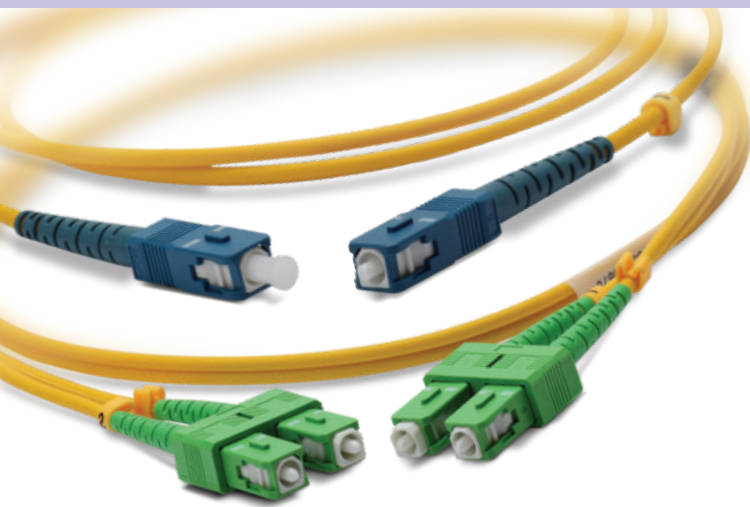
Product Description

Birla pigtails offers Birla pigtails offers superior performance with very high repeatability. The optical fiber pigtails are essential when terminating cables within the splice closure. Purchasing the prepolished assemblies the risk away of poor connector termination in the project. Cables terminated within the production facility will give the higher performance than cable terminated at site. The cables and connectors used in Birla is the best. It is our expertise in Fiber and cable manufacturing that sets our product higher than others. We manufacture the optical fiber assemblies using biconic and SMA through ST, SC to today's small form factor connectors like LC, MU or MT-RJ. If you have the fiber network no matter what the technology is Birla can offer you the solution form optical cable assemblies. With Birla cable assembly you can be confident that you are using very best cable, fiber and connectors in the globe.

Technical Features

Parameters	Multimode	Single mode
Parameters	Multimode	Single mode
Insertion loss	0.2dB Typical	0.15dB Typical
	0.3dB Max	0.25dB Max
Back Reflection	-25dB Typical	-35dB PC Polish
		-45dB Super PC Polich
		-55dB Ultra PC Polish
Connection Durability	500 Matings	500 Matings
Connector Repeatability	$\Delta IL < 0.2dB$	$\Delta IL < 0.1dB$
Operating Environment	-40°C to +85°C	-40°C to +85°C
Temperature Cycling	$\Delta IL < 0.2dB/\Delta RL < 5dB$	$\Delta IL < 0.2dB/\Delta RL < 5dB$
Vibration	$\Delta IL < 0.1dB/\Delta RL < 5dB$	$\Delta IL < 0.1dB/\Delta RL < 5dB$
Cable retension	>6.8 kg	>6.8 kg

Fiber Patchcord Series – SC and LC (Singlemode/Multimode)



Features

- All ceramic ferrules for maximum optical and mechanical performance.
- 100% optically tested (Insertion loss)
- A variety of cable types are available. Custom build design can be delivered
- Accurate mounting dimensions
- As per ITU standard G652D / G657A

Applications:

- Local area Networks
- Fast Ethernet
- ATM Networks
- Testing and measuring instruments
- FDMS, Mounts in wall mount cabinets and rack mount units

Product Description

Birla patchcord offers superior performance with very high repeatability. The Optical fiber patchcords are manufactured in our state of the art manufacturing facility. These patchcords can be ordered in simplex or duplex form. Variety of designs can be offered as per customer requirements. The sheath of the patchcords can be Raiser, Plenum or Lzoh. Precise control on the process always yield low insertion loss patchcords. All the patchcords are compliant with EIA/TIA 568A, TIA 604 FOCIS3 and ISO11801 for optical performance and intermateability. Our advanced manufacturing equipments allow us to manufacture the highest quality patchcords needed for today's stringent optical networks.

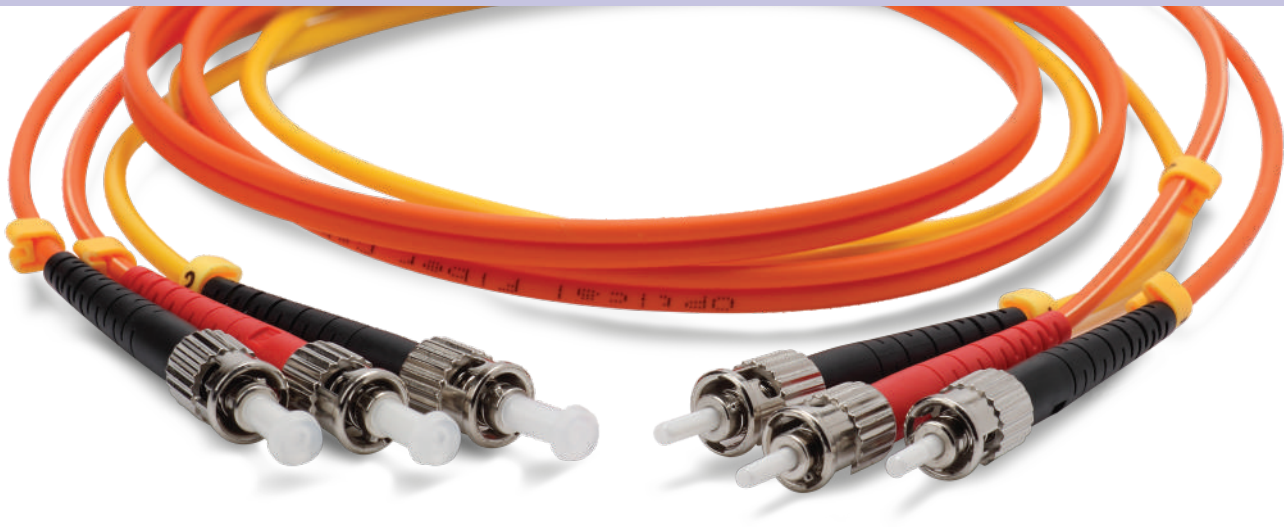
Length:

- 2 to 100 meters
- Customised length options available

Technical Features

Parameters	Multimode	Single mode
Insertion loss	0.2dB Typical	0.15dB Typical
	0.3dB Max	0.25dB Max
Returnloss	-25dB Typical	-35dB PC Polish
		-45dB Super PC Polich
		-55dB Ultra PC Polish
Connection Durability	500 Matings	500 Matings
Connector Repeatability	$\Delta IL < 0.2dB$	$\Delta IL < 0.1dB$
Operating Environment	-40°C to +85°C	-40°C to +85°C
Temperature Cycling	$\Delta IL < 0.2dB / \Delta RL < 5dB$	$\Delta IL < 0.2dB / \Delta RL < 5dB$
Vibration	$\Delta IL < 0.1dB / \Delta RL < 5dB$	$\Delta IL < 0.1dB / \Delta RL < 5dB$
Cable retention 900um	2lbs	2lbs
Ferrul material	Ceramic	Ceramic
Housing material	Composite	composite

Fiber Patchcord Series – ST (Singlemode/Multimode)



Features

- All ceramic ferrules for maximum optical and mechanical performance.
- 100% optically tested (Insertion loss)
- A variety of cable types are available. Custom build design can be delivered
- Accurate mounting dimensions
- As per ITU standard

Applications:

- Local area Networks
- Fast Ethernet
- ATM Networks
- Testing and measuring instruments
- FDMS, Mounts in wall mount cabinets and rack mount units

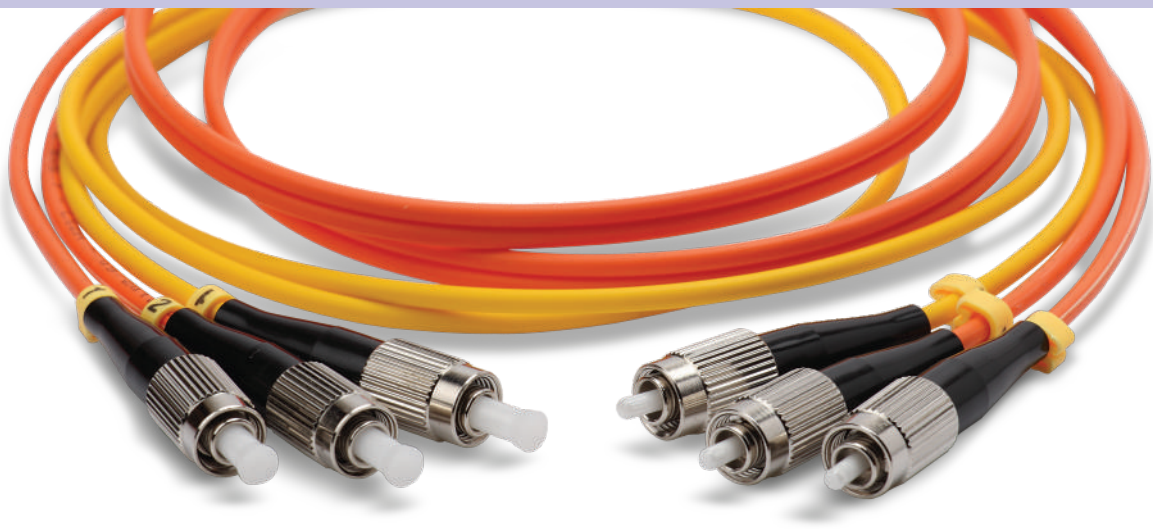
Product Description

Birla patchcord offers superior performance with very high repeatability. The Optical fiber patchcords are manufactured in our state of the art manufacturing facility. These patchcords can be ordered in simplex or duplex form. Variety of designs can be offered as per customer requirements. The sheath of the patchcords can be Raiser, Plenum or Lzoh. Precise control on the process always yield low insertion loss patchcords. All the patchcords are compliant with EIA/TIA 568A, TIA 604 FOCIS3 and ISO11801 for optical performance and intermateability. Our advanced manufacturing equipments allow us to manufacture the highest quality patchcords needed for today's stringent optical networks.

Technical Features

Parameters	Multimode	Single mode
Insertion loss	0.2dB Typical	0.15dB Typical
	0.3dB Max	0.25dB Max
Returnloss	-25dB Typical	-35dB PC Polish
		-45dB Super PC Polish
		-55dB Ultra PC Polish
Connection Durability	500 Matings	500 Matings
Connector Repeatability	$\Delta IL < 0.2dB$	$\Delta IL < 0.1dB$
Operating Environment	-40°C to +85°C	-40°C to +85°C
Temperature Cycling	$\Delta IL < 0.2dB/\Delta RL < 5dB$	$\Delta IL < 0.2dB/\Delta RL < 5dB$
Vibration	$\Delta IL < 0.1dB/\Delta RL < 5dB$	$\Delta IL < 0.1dB/\Delta RL < 5dB$
Cable retention 900um	2lbs	2lbs
Ferrul material	Ceramic	Ceramic
Housing material	composite	composite

Fiber Patchcord Series – FC (Singlemode/Multimode)



Features

- All ceramic ferrules for maximum optical and mechanical performance.
- 100% optically tested (Insertion loss)
- A variety of cable types are available. Custom build design can be delivered
- Accurate mounting dimensions
- As per ITU standard

Applications:

- Local area Networks
- Fast Ethernet
- ATM Networks
- Testing and measuring instruments
- FDMS, Mounts in wall mount cabinets and rack mount units

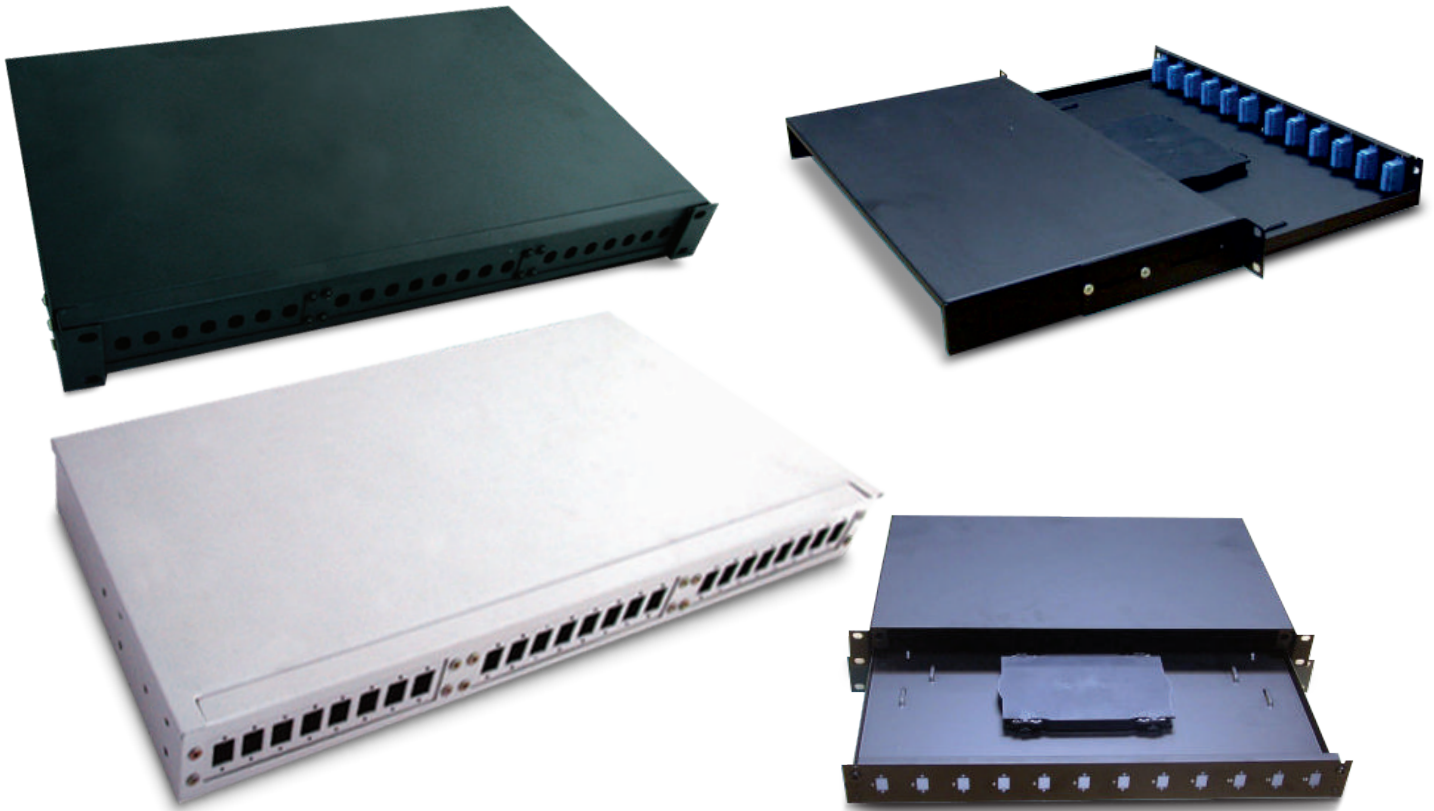
Product Description

Birla patchcord offers superior performance with very high repeatability. The Optical fiber patchcords are manufactured in our state of the art manufacturing facility. These patchcords can be ordered in simplex or duplex form. Variety of designs can be offered as per customer requirements. The sheath of the patchcords can be Raiser, Plenum or Lzoh. Precise control on the process always yield low insertion loss patchcords. All the patchcords are compliant with EIA/TIA 568A, TIA 604 FOCIS3 and ISO11801 for optical performance and intermateability. Our advanced manufacturing equipments allow us to manufacture the highest quality patchcords needed for today's stringent optical networks.

Technical Features

Parameters	Multimode	Single mode
Insertion loss	0.2dB Typical	0.15dB Typical
	0.3dB Max	0.25dB Max
Returnloss	-25dB Typical	-35dB PC Polish
		-45dB Super PC Polish
		-55dB Ultra PC Polish
Connection Durability	500 Matings	500 Matings
Connector Repeatability	$\Delta IL < 0.2dB$	$\Delta IL < 0.1dB$
Operating Environment	-40°C to +85°C	-40°C to +85°C
Temperature Cycling	$\Delta IL < 0.2dB/\Delta RL < 5dB$	$\Delta IL < 0.2dB/\Delta RL < 5dB$
Vibration	$\Delta IL < 0.1dB/\Delta RL < 5dB$	$\Delta IL < 0.1dB/\Delta RL < 5dB$
Cable retention 900um	2lbs	2lbs
Ferrul material	Ceramic	Ceramic
Housing material	composite	composite

Fiber Management Series – Rackmount



Product Description

Birla FMS offers superior performance with very high stability. The Rackmount housings are suitable for any cable design and cable used with any standard Fiber distribution management system with standard adapter plates. The rack mount housings are available in 1U to 4U rack space version and can fit into a standard 19" equipment rack or cabinet. The 1U sized panels is available with front and rear access of patchcord. The 4U sized housing is equipment with front and rear doors. These panels accommodate standard adapters.

Technical Features

Parameters	Advantage
Fast and easy installation in equipment rack	Minimised installation cost and leadtime
FDMS and adapter plates mounted with simple twist lock fasteners	Fast setup and changes to system configurations
Easy access to front and rear connectors for modular cable attachments	Easy access to connectors for cleaning and reconfiguration
compact	In 1U upto 24F and 4U can accommodate 144F
Flexible	Easily reconfigured with industry standard hardware parts
Easily reconfigured with industry standard hardware parts	Saves time
Large sturdy slack management brackets	Saves time in installation

Fiber Management Series – Wall mount



Product Description

Birla FMS offers superior performance with very high stability. The Wall mount fiber optic housings are ideal for telecommunications closet where rack space is not available. The wall mount housing provide easy access and installation of fiber distribution modules or standard adapter panels. The wall mount housing can accommodate both loose tube and tight buffered cables for greater flexibility. A wall mount housing with pre-terminated FDM can increase the productivity of installation crew during installation. The wall mount housings are constructed from sheet metal with robust powder coat and light textured finish. An optional locking kit is available for extra security. The wall mount fiber optic housing can be used for both singlemode and multimode applications and the FDMs or panels are compatible with industry standard hardware.

Technical Features

Parameters	Advantage
Lockable(option)	Restricts entry and eliminate unauthorised access
Compact	Easily mounted on wall or in raised floor using minimal space
Identification lable	Facilitates the location of specific cables quickly and easily
Available pre-loaded	Installs quickly with minimal tools
Grommetted cable entry	Protect cable from damage
Internal cable management system available	Excess cable stored quickly and neatly

Joint Closure



Product Description

The FOSC 400 cable sealing system provides a great deal of flexibility. For example, four small cables can be terminated in the two round ports of a B2 closure with the use of branch-off clips. It is also possible to terminate three cables in the oval port of either closure.

These two closures are identical except for their end cable port configurations. In addition to a large oval port for the main distribution cable, the B2 closure has two large round ports for branch cable splices and the B4 closure has four small round ports for multiple drop applications.

Technical Features

Sr. No	Description	Particulars
1	Dimension (L x D)mm	540 x 180
2	Weight (KG)	< 5
3	Construction Material	
	Dome, Base	P-propylene
	Tray	ABS
4	Round port for cable 8-18mm (max)	4
5	Oval port for cable 10-25 mm (max)	1
6	Number of Fibers (max)	144
7	Number of Splicing trays (max)	6
8	Number of splices per tray (max)	24
9	Degree of protection	IP68
10	Max no. of cable entries	6
11	Operating temperature	Up to 65 Deg C

Technical Features

Description	Type	Qty
Splice protector tube		According to the fiber cores
Fiber protector tube		According to the splice tray
Marking note		1 (piece)
Abrasive cloth		1 (piece)
Cables ties		4 splice tray
Fixture for fixing on the pole		1 set (2 pcs)
Adjustable retainer for fixing on the pole		1 set (1 big 1 small)
Plastic hoop		1 (set)
Branching card		1 (piece)
Earthing wire		1 (STICK)
Heat-shrinkable tube	32 - 00	4 (PCS)
Heat-shrinkable tube	70 - 50	1 (piece)

Pack Information

Inner Carton Dimension (mm)	Inner Carton Weight (kg)	Outside Carton Dimension (mm)	Outside Carton Weight (kg)	No. of Units per Carton (pcs)
580 x 245 x 205	3.5	510 x 415 x 610	15.6	4